

THE GRANITE NEWS



The Granite News - serving the communities of Caveat, Highlands, Hughes Creek, Ruffy, Tarcombe, Terip Terip & Whiteheads Creek.



31st August 2025 | Volume 19 Issue 30

Welcome, Wumindjika & G'day

Recently there was an informative article on Rakalis in TGN and it appears that they are rather common in Melbourne, as well as further afield, as the pictures here show a Rakali in Warrandyte thoroughly enjoying themselves.

However, it's this comment that turns me a darker shade of green - "2 platypus this morning were eclipsed by this sighting." 2!! Not 1 but 2 platypus in one morning with a rakali thrown in for good measure. I'd give my eye teeth for just one of those sightings but this lucky local scored all 3!

But I guess it's good to know that these animals, despite living in an urban area that continues to sprawl, have found an unpolluted habitat where they can frolic in the water. My guess is it's the good old Yarra River.

Please read on for another interesting issue, Pauline And Kenny? Was down a hole checking out the soil testing



Dear Tablelands Community,

RUFFARTZ is planning to bring another fabulous evening of entertainment for your musical and social pleasure in late January 2026. We urgently need to raise some money to make this possible.

We have been given the opportunity to kick this fundraising off by hosting an Entry Point into the Euroa Show and Shine event, first weekend in October. We can have a table there with items for sale.... so, it's to be a good old-fashioned "Jumble Sale!" We will gratefully accept any usable items at all that you would consider donating. Things such as clothing, tools, plants, jams, cakes, biscuits, books, crockery, linen or knick-knacks as possible suggestions for you.

We are truly excited to put on another show for you and hope to sell enough tickets this time to plan for second event later in the year.

Please consider using this chance to help you "declutter" and then join us for the fruits of your gift!

Feel free to message me on 0412 366 783 or drop things off at 268 Buntings Hill Rd Ruffy.

Warm regards
Donna Lee (Chairperson - on behalf of the whole fantastic Committee).

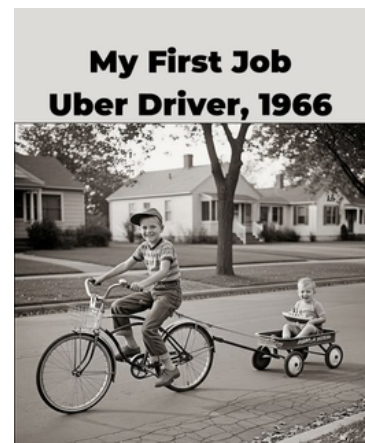
Feedback? editor@tgn.org.au
or to subscribe on-line go to
www.hccclandcare.net.au

The Granite News is an open but moderated community forum. Readers are encouraged to contribute articles and we also encourage you to air your views on things that interest or concern you within our community. We certainly welcome feedback from you, positive or otherwise on anything that is published in The Granite News

"Be passionate about life, enjoy hanging out with the people that you love. Yeah, enjoy it."

Prof. Richard Scolyer
World renowned pathologist

2024 - Joint Australian of the Year



Month	Highlands	Ruffy
August	96.3 mm	69 mm
2025 Total	468 mm	466.5 mm
Rainy Days	10 days	8 days

		What's On - September & October 2025
	Monday 1st Sept. @ 1pm	CRAFTERNOON @ RUFFY @Tablelands Community Centre Come enjoy some creative company and craft the afternoon away. Gabriele 0402 335840
	Friday 5th Sept from 6pm >>	FIRST FRIDAY of the MONTH @ Tablelands Community Centre It's time to put the fun back into Friday nights. Enquiries? 0427 690970 or tccruffy@gmail.com
	Friday 12th Sept@ 6.30pm	DRINKS on the DECK Farewell to Karli & Peter @ Highlands Community Hall Bring food to share and catch up with friends old and new. All welcome, especially new faces. Gold coin donation to cover power. Contact Paula 0419 551882
	Sat. 13th Sept. @ 6pm	HIGHLANDS BOOK GROUP @ Highlands Community Hall
	Thurs. 15th Sept@ 7.30pm	TERIP REC RESERVE AGM @ Terip Rec Reserve All community members are welcome, especially anyone that may be interested in taking on a Committee position or have ideas for future community events.
	Thurs. 25th Sept @5.30pm	SECRET MEN'S BUSINESS @ Caveat Church All people in the district are welcome, pink note (\$5) donation towards BBQ, BYO & chat.
	Sunday 28th Sept @ 10am	HIGHLANDS RAMBLERS WALK meet @ Highlands Community Hall Everyone is welcome to come and explore our stunning local area. Supported by HCCC Enquiries? Andrew 0437 249038 or Robyn 0409 528235
Details? See p.1	Sat 4th & Sun 5th October	EUROA SHOW & SHINE EVENT - time to declutter so RuffArtz can shine too!!
	Monday 6th Oct. @ 11am	HIGHLANDS-CAVEAT SPINNING CLUB @ 450 Caveat-Dropmore Rd Tea, coffee, friendship and laughs will be in plenty. Enquiries? Jan & Ruby 5790 4361
	Every Second Wednesday 10-30-12.30	MURRINDINDI MOBILE LIBRARY SERVICE @ Highlands Community Hall The Mobile Library visits the TGN area, based at the Highlands Hall every fortnight. Why not pop in? Forthcoming dates are 3rd & 17th September.
	Every Monday @ 6pm	MAT PILATES with ANASTASIA @ Highlands Community Hall BYO own mat and water bottle - Cost \$15 cash Enquiries? 0436 428065
	1st & 3rd Tuesdays 1-3	DIGITAL & ON-LINE LEARNING @ TCC, 27 Nolans Rd, Ruffy Just resting until September Enquiries? Bob - 0480 348788
	2nd & 4th Sundays	ST DAVID'S UNITING CHURCH - TERIP RUFFY 2nd Sunday 11.15am Pastor Scott Leslie / 4th Sunday 11am Morning tea & Study group
	Mon 8.45-9.45am	CUSTOM YOGA is BACK with Ingrid at the Tablelands Community Centre \$25 per hour long class BYO mat and blanket Enquiries? Ingrid ingstar.7@gmail.com

Spring is sprung, the grass is riz, I wonder where the wattle is?

Did you know that September 1st is officially recognised as National Wattle Day? No? Well read on.....

History of National Wattle Day

In 1992, the first day of September each year was officially proclaimed 'National Wattle Day' throughout Australia by the Governor-General of Australia, Bill Hayden.

Before then Wattle Days on different days, in different states and territories, had been celebrated since 1st September 1910. This was when the first Wattle Day celebration across state borders took place in NSW, Victoria and South Australia.

Wattle days have been celebrated for different reasons over the last century. For example: they were linked during WW1 to patriotism, a reminder of home for those fighting wars overseas and fundraising for related community causes.

Perhaps Dr Rod Panter summed it up best when he wrote in 1997 that: "Wattle and Wattle Day can symbolise virtually anything we want, but they relate generally to Spring, being Australian, the Australian environment, and history. Spring has many positive values such as optimism, bounty and abundance, reliability, colour, and so on.

We can celebrate our 'Australianness' on Wattle Day in quite a different way from Anzac Day, which in recalling past wars focuses on Australian qualities of courage and mateship.

Wattle day, by contrast, looks forward (to Spring) and can celebrate the nation's undoubted qualities of good humour, fairness, generosity, informality and democracy."



Here's another alternative energy source to assist Australia to get to net zero



Germany's Solar Fences: More Affordable Than Wood, And They Also Generate Electricity!

Editor's note - I wonder how long it will take for this initiative to become commonplace in Australia?

Germany is now using solar fences — vertical fences made of solar panels that not only mark boundaries but also make clean electricity.

These fences are becoming popular on farms, rural areas, and even homes as part of Germany's move toward renewable energy. They are built with bifacial solar panels, which can take in sunlight from both the front and back. This design lets them use light reflected from the ground, making them more efficient even when placed upright.

Compared to normal wooden fences, solar fences cost more at first, but they save money over time by lowering electricity bills. In some cases, they can even send extra power back to the grid. Germany also supports them through government incentives, which makes them a better investment.

They fit perfectly with Germany's Energiewende (energy transition) plan, which focuses on boosting renewable energy. Since Germany has limited land and many people, solar fences are a smart way to save space while producing clean power.

These systems are modular and flexible, so farmers, homeowners, and businesses can easily add them without needing large solar farms or rooftop panels.



iNaturalist

Are you interested in adding to the
iNaturalist's

environmental knowledge base of the local HCCC area?



iNaturalist

If YES then download the App now, follow the instructions for use and start recording our unique natural wonders of both fauna and flora. It's an incredibly valuable resource.

The Strathbogie Granite

The Strathbogie Granite forms a prominent upland in north-east Victoria between Tallarook, Benalla and Mansfield extending for 2000 km². This large granite area dictates the course of rivers and our highways with four distinct plateau areas that are separated by the Goulburn River, Castle Creek and the Broken River. Each of the Tallarook, Highlands, Seven Creeks and Mt Samaria plateaus rise a few 100 m above the surrounding plains and reach 500 to 1000 metres elevation. Hughes Creek drains most of the Highlands plateau, and Seven Creeks drains the Seven Creeks plateau with both watercourses joining the Goulburn River downstream of Seymour. There are two towns on the granite plateau: Strathbogie (with a shop) and Ruffy.

Most of the granite is either coarse-grained with 4-5 cm feldspar phenocrysts or a microgranite (aplite) which has a sugary texture with feldspar and quartz grains about 1-2 mm in diameter. As for all granites, the Strathbogie Granite contains feldspars, quartz and a mica (in this case the black biotite). What makes the Strathbogie Granite globally important for geologists is the abundance of the mineral cordierite ((Mg Fe)₂Al₄Si₅O₁₈); this is present in most samples as tabular 5 to 15 cm crystals that are normally a dull dark green colour. Within the Strathbogie Granite there are several rock variants including the finer-grained Kerrisdale and Lightning Ridge microgranites near Strath Creek, and Lima East, respectively.

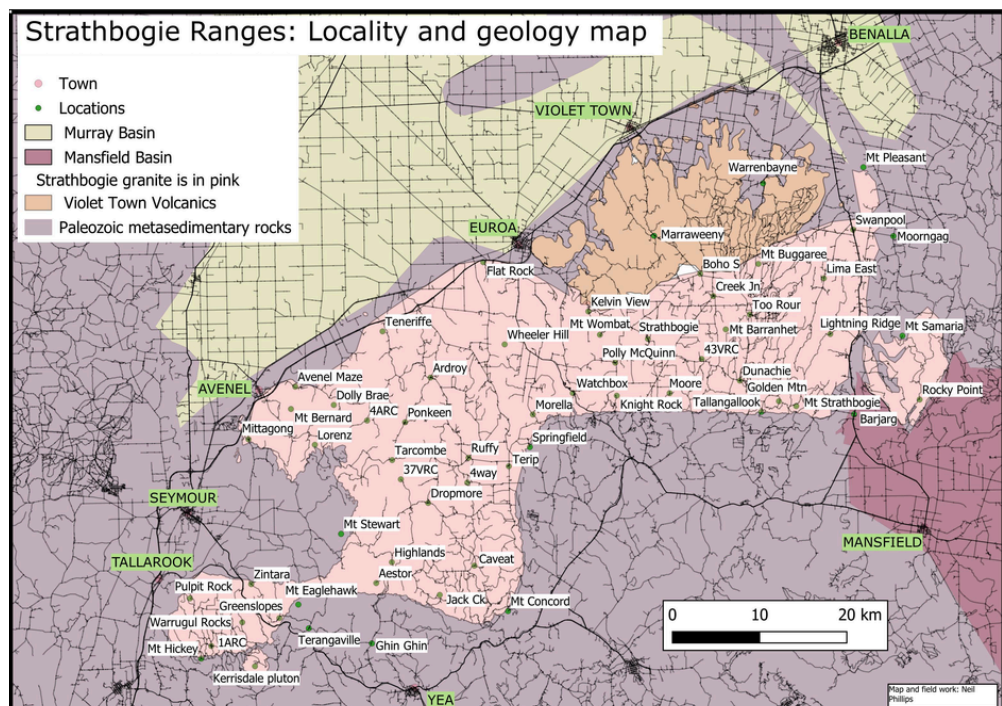
To the north-east of the granite are rocks of the Violet Town Volcanics succession. The boundary of the granite and volcanic rocks is in the vicinity of Kelvin View, Kithbrook, Boho South and Lima, but the volcanics and granite can be similar in appearance. There is a significant contrast in the mode of formation of the volcanic rocks (i.e. those that come out at the surface as lava, ash falls and ash flows) compared to the dominant plutonic rocks (i.e. Strathbogie Granite magma that never reached the surface but solidified slowly underground giving time to grow coarse-grained crystals). Distinguishing the Violet Town Volcanics and Strathbogie Granite is not easy in the field even to the trained eye. Features of the volcanics include microscopic glass shards, flattened pumice and broken crystals.

The Violet Town Volcanics and Strathbogie Granite formed 374 and 373.5 million years ago, respectively. The Earth's crust under central Victoria was especially hot at this time, and rocks melted at 15 km depth to form magma (liquid rock) around 850 – 900°C. Some of the magma, or liquid rock, rose to the surface and formed ash clouds and particularly ash flows (VTV). Different magmas formed slightly later and rose but failed to reach the surface instead spreading out laterally and cooling slowly to form granite.

The high temperature and slow cooling of the granite meant the surrounding sedimentary rocks were baked hard like clay after being heated in a pottery kiln; the resulting hard rock is called hornfels or informally called ironstone or sedimentary rock. Much of the southern boundary of the Strathbogie Granite is marked by the sharp change from granite to hornfels.

Coming later: How do the granite boulders form, and the Strathbogie Granite Project.

Neil Phillips



Many thanks to Neil for sharing his wealth of granite knowledge with TGN readers - Ed.

Tablelands Community Centre

Community Garden Perpetual Calendar Launch and Workshop on Innovative Fruit Growing Techniques

On a brisk morning (with fallen tree removal) filled with the promise of fresh produce, community learning and a scrumptious morning tea our Mayor Claire Ewart- Kennedy officially launched the highly anticipated Community Garden Perpetual Calendar and the completion of the Shelter Shed Veranda project. These initiatives aim to bring residents together, promote sustainable gardening practices, and encourage healthier lifestyles through homegrown produce. Attendees warmed up in a cozy room despite the chilly weather outside. Thank goodness the power wasn't out.

We were thrilled to announce the successful launch of the newly erected veranda on the shelter shed, a project spearheaded by our dedicated community and brought to fruition through the Shire's "Pitch My Project" initiative. Three brave souls left the warm room for the official veranda opening marked by a ribbon-cutting ceremony led by our Mayor, Claire Ewart- Kennedy.

This project is a testament to the strength and creativity of our community members, who came together to envision and advocate for an enhancement to our beloved shelter shed. The project not only adds functionality to the shelter shed but also enhances its aesthetic appeal, making it a more inviting space for all.

We invite everyone to visit the shelter shed and enjoy the new veranda, which is now open for public use and the book exchange will now stay dry.



The Mayor congratulated the community on their achievements and encouraged everyone to participate actively in the garden throughout the year, making use of the perpetual calendar that outlines planting times and jobs to do for various vegetables.

Following the Mayor's inspiring words, the workshop "Clever Techniques for Growing Fruit" proceeded, Melissa Honeydew of Rigby Cottage and apple expert, to share innovative techniques for growing fruits using space-efficient methods that are perfect for gardens of all sizes.

Melissa introduced the concept of espaliers, a method of training fruit trees to grow flat against a wall or fence. This technique not only maximizes space but also allows for easy harvesting, making it ideal for urban gardeners. "Espaliering stone fruits or apples can turn a simple wall into a vertical garden that adds beauty and fruit," Melissa explained.

Following the discussion on espaliers, Melissa highlighted step-overs—a creative way to train low-growing fruit bushes or trees to create a living pathway. "Not only do they provide easy access for picking, but they also serve as an enchanting addition to any garden," she remarked.

The session then moved to tree clusters, which involve planting several fruit trees close together to create a mini orchard. This technique enhances pollination and helps fruit trees support one another. "By planting compatible varieties together, we enhance fruit quality and yield," Finally, the speaker discussed using tubs and barrels for fruit cultivation. This technique is particularly useful for those with limited space. "Almost any fruit tree can thrive in a container, allowing you to enjoy fresh fruit even with limited space," Melissa noted that a little more care was needed using containers particularly with water needs.

As the session progressed, participants asked questions and shared their gardening experiences, fostering a sense of camaraderie and collective learning.

Despite the cold temperatures outside, the warm atmosphere inside reflected the community's enthusiasm for gardening and growing together. The launch of the Community Garden Perpetual Calendar, combined with innovative techniques for fruit cultivation, sets the stage for a productive and enjoyable gardening season ahead.

Thank you to all who braved the weather to attend the launch and workshop. For those wishing to purchase a calendar drop into the Tablelands Community Centre on a Tuesday or contact Cheryl on 0409 019 763. If you would like to purchase fruit trees you can catch Melissa at the Avenel Market.



Calling all green thumbs, or wannabes....it's on again!



The Rotary Club of Yea is hosting a **Garden Expo on Sat/Sun 20 -21 September, 9am – 3pm**. The Expo is an opportunity to view a host of garden related products in a relaxed atmosphere at the Yea Saleyards (Flat Lead Road), just off the Yea Whittlesea Rd on a flat, sealed, dog friendly and easily accessible site for everyone.

Entry fee is just \$12 (Concession \$10) with free parking (children under 16 free) and there will be a plentiful supply of food and drink vendors on site. 70 vendors will be present with all things to do with gardening present with exhibits ranging from bulbs, seeds, seedlings, flowering plants and trees, garden tools, equipment, art and ornaments, compost, fertilisers and more.

A daily speaker program will cover a range of topics sure to please all gardeners and with plenty of opportunities to ask questions and have your garden issues solved! New this year will be Black Snake, at 12.30pm Saturday with a range of animals for kids and adults alike to enjoy. Other speakers will cover bee keeping, landscape design, gardens for attracting native fauna and the popular Craig Castree on his regenEdible – how to grow real food.

Also this year, for Saturday only will be free face painting, so be sure to bring the kids – U/16 is free entry! Details at website www.yearotary.org.au or keep up to date via Facebook. Pay at the gate or book online (it's cheaper) at <https://www.trybooking.com/DBYVB> See p.8 for more details

Highlands-Caveat Spinning Club.....

is BACK!!

We will meet on Monday 6th. October after a break.....

Beginning at 11 a.m.. Tea, coffee, and nibbles provided.

Hope to see you there. New members are welcome.

We are a friendly group.

Address:- 450 Caveat-Dropmore Road,
Caveat.

Enquiries? - Jan Sporry 5790 4361



HIGH VOLTAGE

Sunday 7th
September
4pm
Yea Shire Hall

All welcome
FREE
Concert

YEARTS INC
JOF

Australian Government
Murrindindi Shire Council
VICTORIA State Government

A poster for a 'High Voltage' concert. The title 'HIGH VOLTAGE' is in large, stylized yellow letters with black outlines and lightning bolt accents. Below it, the date and time are listed: 'Sunday 7th September 4pm' and the venue 'Yea Shire Hall'. To the right, it says 'All welcome FREE Concert'. At the bottom, there are logos for 'YEARTS INC', 'JOF', 'Australian Government', 'Murrindindi Shire Council', and 'VICTORIA State Government'. A red electric guitar is shown on the right side of the poster.

Bushwalk - Bald Hill - Strathbogie

Time & Date: 9:30am-12:30pm, Saturday 6th of September

Start Location: 533 Tames Rd, Strathbogie
(RSVP for meeting point)

Difficulty: Easy to moderate

Length: 6km

Cost: Free as always

Bring: A hat, lunch, water and sturdy walking shoes

Warm up for the Spring walking season with a jaunt through the landlocked Bald Hill in Strathbogie. Much of the bush and the small crown land reserve is surrounded by private property, as is the Bald Hill creek which winds along the accompanying valley before eventually ending up in the Seven Creeks.

The famous Kelly Caves (famous for being one of many) are nestled into the underside of the gigantic boulders which give the hill its name.

The walk will be a circuit so no car shuffle will be needed. We'll head up the hill and walk along the ridge, explore the outcrops and caves, before descending back down to the creek.

Please note that no pets are allowed on the walks. Reception may be limited, so save the locations in your phone before you leave home. As always, if the weather is looking unappealing on the day, the date may be moved.

RSVPs are essential, so please email us at
admin@strathbogieranges.org



**STRATHBOGIE
RANGES
CONSERVATION**
MANAGEMENT NETWORK

Healthy Soils Healthy Farms

INTERPRETING YOUR SOIL TEST

With Declan McDonald

Declan McDonald is a certified practicing soil scientist with 30 years' experience in soil and horticultural management. With qualifications in horticulture, agriculture and climate change, Declan is uniquely placed to understand the complex interactions between soils, plants and climate. Declan uses this knowledge to engineer sustainable soil management solutions across agricultural industries including grazing and cropping.



10 SEPTEMBER, 2025

HOMEWOOD HALL,
30 Homewood Rd,
Homewood

9.30 FOR 10AM

UNTIL 2.30PM

Morning tea and lunch
supplied

What others said:

"An excellent speaker, very knowledgeable. Nice to see regen ag backed up by real science."

"I found Declan articulate and accessible."

"Declan was fantastic today."

Free to attend
registration required

Follow this link OR use the QR code



You will learn:

- how to read your soil test
- visual soil assessment - what to look for
- how soil chemistry & soil biology interact
- management practices to enhance soil function = more production
- specific actions for your soil

BRING COPIES OF YOUR SOIL TEST RESULTS

More information:

Rhiannon Sandford
Sustainable Agriculture Facilitator
Goulburn Broken CMA Ph: 0429 964 609

Supported by the Goulburn Broken CMA with funding from the Australian Government's Natural Heritage Trust Climate Smart Ag Program



Healthy Soils Healthy Farms

PROFITABLE FARMING IN UNPREDICTABLE CONDITIONS

with Kim Deans

2-day workshop, two locations

2-3 September 2025 | Molyullah Hall, Molyullah

4-5 September 2025 | Kings Park, Seymour



Day 1 - Bring your own soil cube to discover and learn with!

Kim is a holistic agricultural scientist, facilitator and coach who works with farmers who are ready to turn their challenges into opportunities. These opportunities include soil health restoration, regenerative transitions, and improved farm business management. Kim empowers farmers to break out of information overwhelm and take effective action relevant to their personal goals and unique context. Find out more about Kim www.reinventingagriculture.com.au



DAY 1 - Soil health as the foundation for profit and resilience

- Soil biology basics
- Assess your soil's health
- Harness FREE inputs
- Weeds as indicators
- Design soil health strategies that deliver results

DAY 2 - Practical strategies to improve soil health

- Grazing management
- Cover crops & multispecies plantings
- Biological inputs
- Financial foundations of successful soil health programs
- Develop your soil health action plan

Tickets \$30 for two days.
Each day will run from 9am for 9.30 start - 3.30pm.
Tea, coffee, morning tea and lunch from local producers.

For more info contact Rhiannon Sandford, Sustainable Agriculture Facilitator GBCMA, 0429 964 609

Bookings:

[Molyullah 2-3 Sep](#) | [Seymour 4-5 Sep](#)



Supported by Goulburn Broken CMA with funding from the Australian Government's Natural Heritage Trust Climate Smart Agriculture Program and local sponsors

Planning for Change in Landcare

Change is coming whether we plan for it or not. When we plan well it is called succession and when we don't it is called a crisis.

This workshop will help volunteer committees build strong leadership channels and create a culture of succession that will support their community groups long term success.



Presenter: Kimberley Boswell

Kim is a Facilitator, Trainer and Coach with more than 25 years experience in community engagement, fundraising and volunteer program management.

Kim's involvement in Landcare and environmental volunteer groups spans 15 years having served as a Landcare Network president, group committee member, volunteer and in a working capacity at a network, state and national level.

Kim is a regular consultant and facilitator to the movement and the founder of Community Leaders Academy, an online community providing tailored support to professionals in Landcare and beyond.

Kim has over 150 skills-based trainings and facilitation of strategic planning sessions for Landcare and environmental groups.

What will be covered

Understanding barriers to change

By understanding the most common barriers holding us back, we can understand where we are resistant to change in order to move forward.

What's in it for me?

By implementing some key principals and practical tools, we can make succession a part of our everyday culture and a natural flow of the organisation rather than something that sits on the to do list and never gets actioned.

Useful Tools

A selection of recommended free tools and resources that support groups by making things easier to track where they are, capture organisational knowledge and recruit volunteers in a planned and systematic approach.



WORKSHOPS AVAILABLE

Swanpool: Tuesday 9th September, 1-5pm (lunch included)

Register:

Shepparton: Wednesday 10th September, 9-1pm (lunch included)

Register: <https://www.trybooking.com/DEFKT>

Seymour: Wednesday 10th September, 4pm-8.30pm (dinner included)

Register: <https://events.humanitix.com/planning-for-change-in-landcare>

FOR FURTHER INFORMATION

kerstiel@gbcma.vic.gov.au

0437 310 840



TERIP TERIP REC RESERVE

AGM

15th SEPTEMBER 7:30 PM

NEW MEMBERS NEEDED

Rotary
Club of Yea



YEA



GARDEN EXPO

20 & 21 SEP 2025
9AM - 3PM

Location: Yea Saleyards

Flat Lead Road, Yea (see website for directions)

Only an hour from Melbourne!

Native & flowering plants
Garden sculptures
Motorised barrows & vehicles
Garden tools & Vegetable bins
Seedlings
Mulch, fertilisers & compost
Ride-on & push mowers
Nurseries
Small chainsaws
Roses
Deciduous & Ornamental trees
Garden books
Plant Creche
Speakers Program
And much more.....

**FOOD & DRINKS
AVAILABLE!**

Entry \$12 at the gate - \$10 booked online
Concession \$10
Kids U/16 FREE.

Pay at the gate or book online via www.trybooking.com:
www.trybooking.com/DBYVD (Bookings open August 1st)



FREE PARKING

Contact: yeagardenexpo@gmail.com

www.yearotary.org.au



<p>HABBIES HOWE BEEF</p> <p>Mature, Well Hung and Available from:</p> <p>Victory Meats, Seymour Victory Meats, Broadford Scotch and Fillet, St Helena Scotch and Fillet, Mentone</p>	 <p>Donated by supporters of the magnificent King Parrots.</p>	<p>DE MARIA & ASSOCIATES <i>Barristers & Solicitors</i></p> <p>Family Law Conveyancing Power of Attorney & Wills Estate Disputes Deceased Estates</p> <p>☎ 03 9717 5277</p> <p>Level 1, Suite 111 95 Hazel Glen Drive, Doreen Vic 3754 justice@demariaandassociates.com.au</p>	 <p>Donated by Friends of Yellow Box (Eucalyptus Meliodora)</p>
<p>This space needs a sponsor...</p> <p>Is it YOU?</p>	<p>"A new name but the same friendly staff at Seymour"</p> <p>Join our Loyalty card program & save</p> <p>IF YOU WANT IT - WE'VE GOT IT</p> <ul style="list-style-type: none"> - Animal Nutrition, Health & Feed Supplies - Pasture, Seeds, Weed/Pest Control & Fertiliser - Feed Testing - Pet Food & Accessories - Equine Supplies - Water Troughs, Poly Pipe & Fittings - Fencing & Livestock Handling <p>Glenn: 0439 990 480 Store: 03 5792 1088 Email: seymour@wbhunter.com.au</p> <p>HUNTERS TRADE • RURAL • HARDWARE</p>	<p>Little Antechinus living in a hollow near you</p> 	<p>BenCo</p> <p>PLUMBING SERVICES</p> <p>Ben Laycock</p> <p>0438 512299 Licence no. 105134</p> <p>ben@bencoplumbingservices.com.au bencoplumbingservices.com</p>
<p>DINDI ELECTRICAL SERVICES</p> <p>DOMESTIC COMMERCIAL COMMUNICATIONS</p> <p>Get in touch for all your electrical needs</p> <p>Coen Bird</p> <p>0433 885 441 coenbird@dindielectrical.com.au</p>	<p>KOPANICA PASTORAL EXCAVATIONS & CARTAGE</p>  <p>DAMS EARTHWORKS STOCK+WATER CARTAGE & MORE</p> <p>0429 804 235 MICHAEL.KOPANICA@GMAIL.COM</p>	<p><i>Highlands Haulen</i> AND RECOVERY</p> <p>Local and Statewide Transport</p> <ul style="list-style-type: none"> - Hay / Silage - Farm Equipment - Machinery / Excavators - Building Supplies - Sheds / Cabins - Trucks / 4X4s - 24/7 Breakdowns <p>Steve 0419 860 484 haulen.com.au</p>	
<p> Murrindindi Shire Council</p> <p>Cr Paul Hildebrand</p> <p>Koriella Ward phildebrand@murrindindi.vic.gov.au 0428 758 617</p>	<p>Tablelands Community Centre</p> <p>Upgraded facilities & playground</p> <p>Ideal for private or community gatherings, meetings, workshops</p> <p>Very Reasonable rates</p> <p>Hosts 1st Friday BBQs</p> <p>Contact tccruffy@gmail.com</p> <p>0427 690970</p>	<p></p> <p>KOBYSOYN CONTRACTING & KILPIES SINCE 2025</p> <p>For all your livestock needs (sheep, cattle, spot spraying)</p> <p>No job to big or small. Competitive pricing. Please contact David on 0417 150113</p>	<p>Donated by supporters of our local koala population</p> 
<p>Donation from supporters of our local Platypus</p> 	<p>HIGHLANDS GROVE</p> <p>Australian, locally produced premium extra virgin olive oil.</p> <p>Farm gate pick up or delivery available.</p> <p>0417 018 070 enquiries@highlandsgrove.com.au highlandsgrove.com.au</p>	<p></p> <p>HIGHLANDS COMMUNITY HALL</p> <p>Meeting Room and/or Hall available for hire</p> <p>MEETINGS FUNCTIONS WORKSHOPS PARTIES WEDDINGS</p> <p>Reasonable Rates Contact Paula Lade 0419 551 882</p>	<p>Donated by friends of the Long Leafed Box Trees</p> 
<p>Echidnas take care of their habitat</p> 	<p>Granite Hills Community Nursery</p>  <p>www.granitehillsnursery.com.au</p>	<p>Need a website? bluetopbiz.com.au</p> <p>Affordable web design & maintenance. Presentations, marketing copy.</p> <p>Grant applications, project management.</p> <p>Call</p> <p>Sue 0411 010 379 Neil 0417 503 472</p> <p>Email: sue@bluetopbiz.com.au</p>	 <p>Strathbogie Granite Project neil.phillips@bigpond.com</p>



The Granite News is widely distributed on the lands of the Taungurung clans - First People of the Rivers and Mountains.

We thank the Taungurung ancestors and elders who, for millennia, have cared for this country on which we now live, work, play and grow.

May the current generations of Taungurung, HCCC residents & landowners continue this important custodianship into the future.